



News

CAD Managers Forum Held

Our inaugural CAD Managers Forum was held in January. The great turnout consisted of attendees from Madison and around the state. Our topic of discussion was the new release of MicroStation XM. The discussion included licensing procedures, new minimum hardware requirements, and enhancements to MicroStation.

We will continue holding these meetings once a quarter learning from each others experiences with Bentley software. Our next meeting is scheduled for April. We will be sharing our collective knowledge on plotting, pentables, plot drivers, and PDF Composer. Keep an eye on our events section of this newsletter for the specific dates and places.

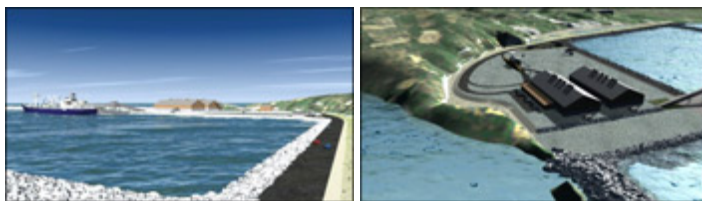
New Seminar Series offered for MicroStation XM

If your company is interested in the new features and operation of MicroStation XM, the Envision Group can provide you with a 2-hour seminar on MicroStation XM at your office. [Contact us](#) for specifics and pricing.

New Port Design 3D Animation

Check out 2 short clips from our latest work on port location, layout, and design on the coast of Madagascar. Built in MicroStation and rendered within e-On's Vue 5 Infinite, we combined ortho photography, existing terrain and conditions, and proposed port and quay design to create a short movie clip to help illustrate the project's features. As an ongoing project, we will be adding more design details and implementing changes in the near future.

Click on the images below to view each short clip (5mb, Windows Media Video)



Legal Stuff:

We do not sell Bentley products. MicroStation and InRoads are Bentley products and trademarked as such. We only offer this information as a benefit to our subscribers.

Events

<< back to top

Bentley:

- [BE Conference 2007](#) - Apr. 29 - May 3, 2007
Los Angeles Convention Center - Los Angeles, CA
- [BE Conference Europe 2007](#) - Jun 10-14, 2007
Hilton London Metropole - London, United Kingdom

Other:

IN THIS ISSUE

1. [News](#)
2. [Events](#)
3. [MicroStation tip](#)
4. [InRoads tip](#)
5. [Open enrollment classes](#)
6. [On-site training](#)

SPREAD THE WORD

Spread the word. Pass this newsletter on to a friend. If a friend forwarded this issue to you, sign up for your own copy.

QUICK LINKS

- [Click for past issues.](#)



- [AIA Convention & Products Expo](#) - May 16-17, 2007
 Monona Terrace Convention Center - Madison, WI
 Come visit us in booth #5!

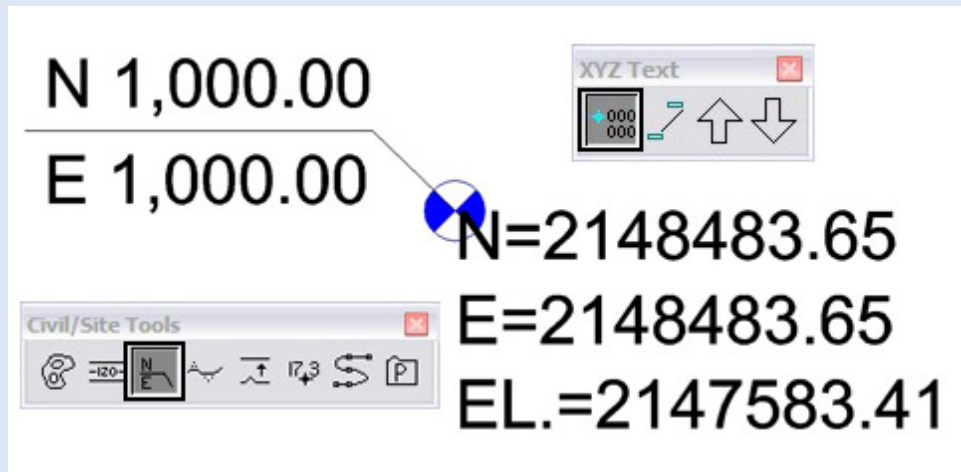
Are there TMC Meetings, Seminars, Trade shows, and Conferences you think are interesting? [Let us know](#) and we will add them to our newsletter.

MicroStation Tip

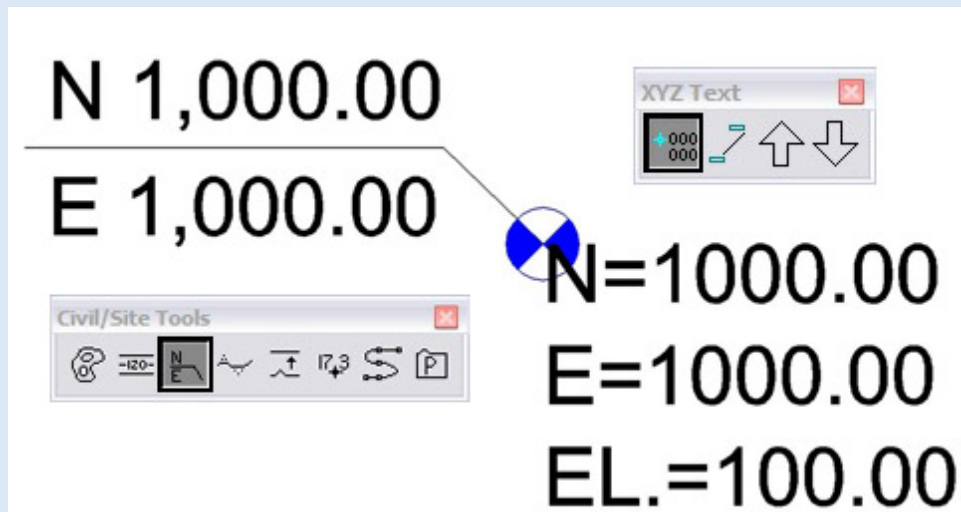
<< back to top

Different coordinate values same point?

The two MicroStation tools I use the most for labeling coordinates are **XYZ Text** and **Civil/Site Tools**. Both set of toolboxes have icons for labeling coordinates. You start scratching your head when each tool gives you a different coordinate number. The screen shot below shows an example of what I mean.



What has happened here is there is an Auxiliary Coordinate System (ACS) that has been defined. The Label Coordinate tool from the XYZ Text toolbox is labeling based on the current ACS. If you want to label the point based on the real world coordinates type this into the key-in browser '**label useacs toggle**'.



Now both tools are labeling the same point with the same coordinates. If you have never seen this before you are lucky, but print this out and keep it on hand.

[[Tip Archives](#)]

Generate subsurface DTM's from log information

*** This tip is for InRoads - All Versions*

Are you aware that you can generate subsurface DTM's from boring log information? The input can be in the form of station and offset from an existing alignment or at specified Northing and Eastings with the DTM's being created relative to an existing DTM.

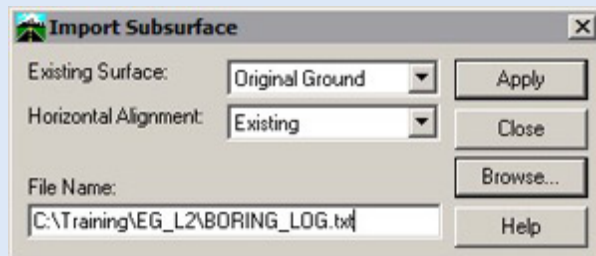
A sample coordinate based input showing 3 borings would look like:

```
// Comments
// SO|station|offset|borehole name
// XY|x coord|y coord|borehole name
// LD|layer|depth|ftrDesc|ftrStyle
XY|901624.02|300866.15|B1
LD|TOPSOIL|0.0|Gnd|existing
LD|SAND|1.5|sand|Sand
LD|CLAY|2.5|modeled|Clay
LD|ROCK|5.0|grantie|Rock
LD|GROUNDWATER|22|contaminated|GW

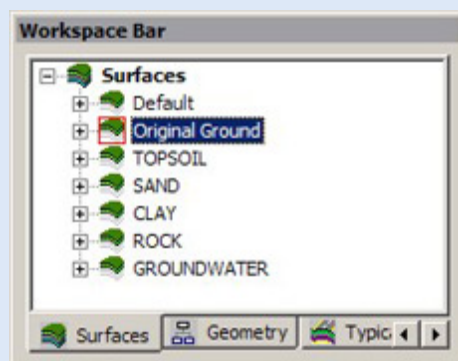
XY|901624.02|300714.15|B2
LD|TOPSOIL|0.0|Gnd|existing
LD|SAND|1.0|snad|Sand
LD|CLAY|3.5|grey|Clay
LD|ROCK|7.0|sandstone|Rock
LD|GROUNDWATER|32|dirty|GW

XY|901791.78|300796.71|B3
LD|TOPSOIL|0.0|sandy|existing
LD|SAND|2.5|sand|Sand
LD|CLAY|2.9|black|Clay
LD|ROCK|8.0|SS|Rock
LD|GROUNDWATER|12|clean|GW
```

To enable this function; select **Tools>Application Add-ins [Import Subsurface Add-In]**. Once enabled; select **File>Import>Import Subsurface**



Once applied, the sub-surfaces will be created based on depth from the 'Existing Surface' specified.



Open Enrollment Classes

[<< back to top](#)

Open-Enrollment Classes With Seats Available.

MicroStation V8 - Advanced	Feb. 19-21	Madison, WI
MicroStation V8 - Fundamentals	Feb. 27 - Mar. 2	Madison, WI
MicroStation V8 - 2004 User Upgrade	Mar. 20-21	Madison, WI
MicroStation V8 - Power User	Mar. 22-23	Madison, WI
MicroStation V8 - Mastering AccuDraw	Apr. 13	Madison, WI
MicroStation J - Fundamentals	Apr. 17-20	Madison, WI
InRoads - Survey	Mar. 6-7	Madison, WI
InRoads - Fundamentals	Apr. 23-27	Madison, WI

To be removed from this monthly newsletter, please reply to this message and note your wishes.

[Top](#) | [Contact us](#) | [Visit our web site](#)