



News

We're in!

We now have completed our move to a more spacious suite within the same building. Make sure you update your records if trying to contact us.

The Envision Group
8517 Excelsior Drive, Suite 102
Madison, WI 53717
Phone: (608) 836-3903
Fax: (608) 662-9043

Visualization Expansion



The Envision Group has added another member to our team, Ben Felder. Ben will be helping out with the visualization department's workload. This added member means we can accept more projects and turn them around faster to meet your tight deadlines. Let us know if we can be of any help with your visualization needs.

Legal Stuff:

We do not sell Bentley products. MicroStation and InRoads are Bentley products and trademarked as such. We only offer this information as a benefit to our subscribers.

Events

[<< back to top](#)

Bentley:

- [Mid-Continent MicroStation Community 2007 Summer Conference](#) - Aug 15-16, 2007
Overland Park Convention Center - Overland Park, Kansas
- [The IDDEA Group 2007 Fall Conference](#) - Oct 3-5, 2007
Scheman Center on Iowa State Campus - Ames, Iowa
- [BCUKI Winter Conference 2008](#) - Feb 28-29, 2008
Sheraton Heathrow Hotel - London, UK

Are there TMC Meetings, Seminars, Trade shows, and Conferences you think are interesting?
[Let us know](#) and we will add them to our newsletter.

IN THIS ISSUE

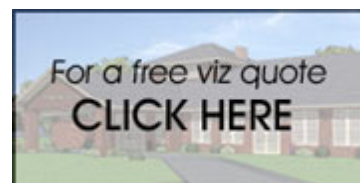
1. [News](#)
2. [Events](#)
3. [MicroStation tip](#)
4. [MicroStation XM tip](#)
5. [InRoads tip](#)
6. [Open enrollment classes](#)
7. [On-site training](#)

SPREAD THE WORD

Spread the word. Pass this newsletter on to a friend. If a friend forwarded this issue to you, sign up for your own copy.

QUICK LINKS

- [Click for past issues.](#)

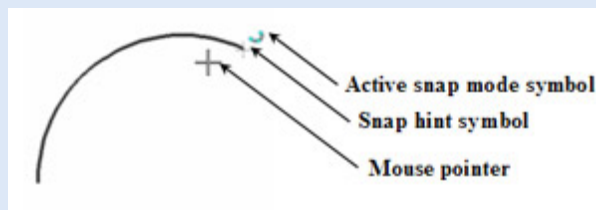


AccuDraw

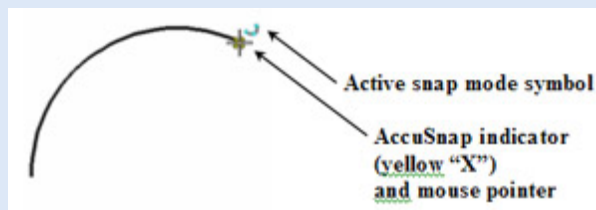
An improvement on the old Tentative snapping in MicroStation is AccuSnap which can locate exact positions on elements automatically (i.e. endpoints, center points, midpoints, etc.).

There are fourteen predefined settings that are used to snap to existing elements. These settings are called **snap modes**. Each specific snap mode, when active, will find and identify the locations on existing elements that it is assigned to. For example, when the midpoint snap is active, anytime the mouse pointer is close to a midpoint of an element (i.e. line, block, arc, etc.) AccuSnap identifies that location with a snap hint symbol.

This symbol is a small crosshair that will appear when the mouse pointer is “close” to the element. Along with the hint symbol, the small active snap mode symbol will appear. This symbol simply shows which snap mode is currently being used.



If you move your mouse pointer over the snap hint symbol, a yellow “X” will appear. The yellow “X” is the AccuSnap indicator showing that snap location can now be accepted with a 'D' button.



AccuSnap Settings

There are several AccuSnap setting options that are available in the AccuSnap Settings dialog box that control the operation of AccuSnap.

The AccuSnap Settings dialog box can be accessed from the following options:

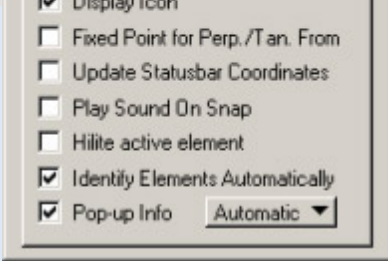
1. From the MicroStation menu bar, choose **Settings > Snaps > AccuSnap**.
2. **'R'** on the *Toggle AccuSnap* button from the *Snap Mode* button bar and choose the *Properties* option.
3. Choose *AccuSnap* from any of the snap flyout menus.
4. Enter “**dialog accusnap**” in the Key-in window, (**Utilities > Key-in**).

The AccuSnap settings are separated into three categories or tabs. These tabs include the *General*, *Elements*, and *Feel* tabs:



General tab – Includes options specifying which AccuSnap features are active. It also contains options for turning AccuSnap on and off.

Elements tab – Contains options for allowing



or preventing snapping to specific types of elements.

Feel tab – Contains options that will allow you to adjust the tolerance of specific Accudraw controls.

AccuSnap can be temporarily disabled by holding down the **CTRL + SHIFT** key. When it appears that AccuSnap is not working **CTRL + SHIFT** can also enable AccuSnap for commands such as Place Fence and InRoads tools.

[[Tip Archives](#)]

MicroStation XM Tip

<< back to top

Cloud Command

If you have used the sscloud command in MicroStation you will be pleased to know the cloud command is available in the XM Edition of MicroStation. From the pulldown menu select **Tools > Annotation > Cloud**. The Cloud toolbox will appear.



The options to place a cloud are by point or by element.

[[Tip Archives](#)]

InRoads Tip

<< back to top

InRoads key-in's

Did you know you can input bearings without using special characters?

Typing N22 14 56E will convert the format to N 22°14'56"E when you tab from the InRoads input field.

Using the MicroStation key-in browser, you can input SO=Station value, Offset values to create either InRoads or MicroStation elements relative to the active alignment. Just remember to input a negative offset value for locations to the left of the reference alignment.

Keying in SE=Station value, Elevation value has the same effect when working in a profile set.

When inputting slopes you can vary the input format and InRoads will display the format specified under Tools>Options>Units and Format. For a 50% slope, allowable key-ins are 50%, .5, 1:2, 6":1'

[[Tip Archives](#)]

Open Enrollment Classes

<< back to top

Open-Enrollment Classes With Seats Available.

MicroStation V8 - User Upgrade	Jul. 10-11	Madison, WI
MicroStation V8 - Power User	Jul. 12-13	Madison, WI
MicroStation V8 - AccuDraw	Aug. 17	Madison, WI
MicroStation V7 (J) - Fundamentals	Aug. 21-24	Madison, WI
● THIS WILL BE OUR LAST V7 OPEN ENROLLMENT OFFERING		
InRoads - Survey	Jul 19-20	Madison, WI
InRoads - Fundamentals	Aug. 6-10	Madison, WI

To be removed from this monthly newsletter, please reply to this message and note your wishes.

[Top](#) | [Contact us](#) | [Visit our web site](#)