



News

New Courseware for V8 Available



Courseware for MicroStation V8 is now available for purchase. These manuals are complete with reference information and a CD containing lab exercises. Two versions are available: one for Civil Engineering and one for Architectural work. These 725-page manuals are priced at \$95/manual. For a Table of Contents [click here](#). An additional XM Update manual will be available for purchase this fall.

Please [contact us](#) for additional information about our training services and courseware purchasing.

Legal Stuff:

We do not sell Bentley products. MicroStation and InRoads are Bentley products and trademarked as such. We only offer this information as a benefit to our subscribers.

Events

[<< back to top](#)

Bentley:

- [Mid-Continent MicroStation Community 2007 Summer Conference](#) - Aug 15-16, 2007
Overland Park Convention Center - Overland Park, Kansas
- **CAD Managers Forum** - Sept 14th, 2007 (11:00am - 1:30pm),
Strand Associates - 910 West Wingra Drive, Madison, WI.
Rick Larson from the Wisconsin DOT has graciously volunteered to speak about the DOT decision to replace the CAiCE design software. Please [RSVP](#) by September 7th so we can get a good head count.
- [The IDDEA Group 2007 Fall Conference](#) - Oct 3-5, 2007
Scheman Center on Iowa State Campus - Ames, Iowa
- [BCUKI Winter Conference 2008](#) - Feb 28-29, 2008
Sheraton Heathrow Hotel - London, UK

IN THIS ISSUE

1. [News](#)
2. [Events](#)
3. [MicroStation tip](#)
4. [MicroStation XM tip](#)
5. [InRoads tip](#)
6. [Open enrollment classes](#)
7. [On-site training](#)

SPREAD THE WORD

Spread the word. Pass this newsletter on to a friend. If a friend forwarded this issue to you, [sign up](#) for your own copy.

QUICK LINKS

- [Click for past issues.](#)



Are there TMC Meetings, Seminars, Trade shows, and Conferences you think are interesting? [Let us know](#) and we will add them to our newsletter.

MicroStation Tip

<< back to top

Coordinate Input

Placing elements in MicroStation is usually done one of two ways: absolute coordinates or relative to an existing point. Workflows for placing those elements to absolute coordinates can be done one of two ways: using the Key-in Browser dialog or using AccuDraw's Data Point Key-in.

Via the Key-in Browser:

Absolute Coordinates

1. Select a placement tool
2. In the key-in browser type the coordinates: **"XY=1000,1000,0"**
3. Hit the Enter key on the keyboard or the Run icon from the key-in browser. The element will be placed at the keyed in coordinate value.
4. Continue to use the key-in browser and the "XY=" key-in to finish placing elements/vertices/cells...

Relative Point

1. Select a placement tool.
2. Tentative snap to the relative origin point.
3. In the key-in browser type the relative distance you want to move : **"DL=20,10,0"**
4. Hit the Enter key on the keyboard or the Run icon from the key-in browser. The element will be moved 20 units in the X direction, 10 units in the Y direction, and 0 units in the Z direction.

Via AccuDraw:

There are two shortcut key-ins defined in AccuDraw that will allow you to place elements to specified values, they are "P" and "M".



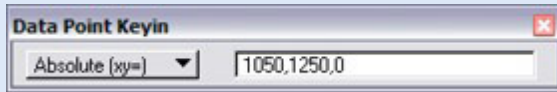
- **"P"** - will open the Data Point Key-in dialog for a one time key-in value and will then close when it is accepted.
- **"M"** - will open the Data Point Key-in dialog and will remain open after each value is accepted.



Absolute Coordinates

1. Select a placement tool
2. With the Focus with the AccuDraw dialog use the **"M"** shortcut key. The Data Point Key-in dialog will appear.

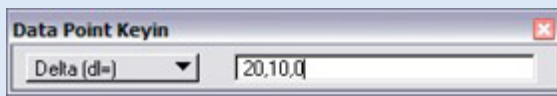
3. From the drop down list select the “**Absolute (xy=)**” and enter the values in the key-in field.



4. Hit the Enter key on the keyboard. The element will be placed at the keyed in coordinate value.
5. Continue to use the Data Point Key-in and the “**Absolute (xy=)**” option to continue placing elements/vertices/cells...

Relative Point

1. Select a placement tool.
2. Tentative snap to the relative origin point.
3. With the Focus with the AccuDraw dialog use the “**M**” shortcut key. The Data Point Key-in dialog will appear.
4. From the drop down list select the “**Delta (dl=)**” and enter the values in the key-in field.



5. Hit the Enter key on the keyboard. The element will be moved 20 units in the X direction and 10 units in the Y direction.

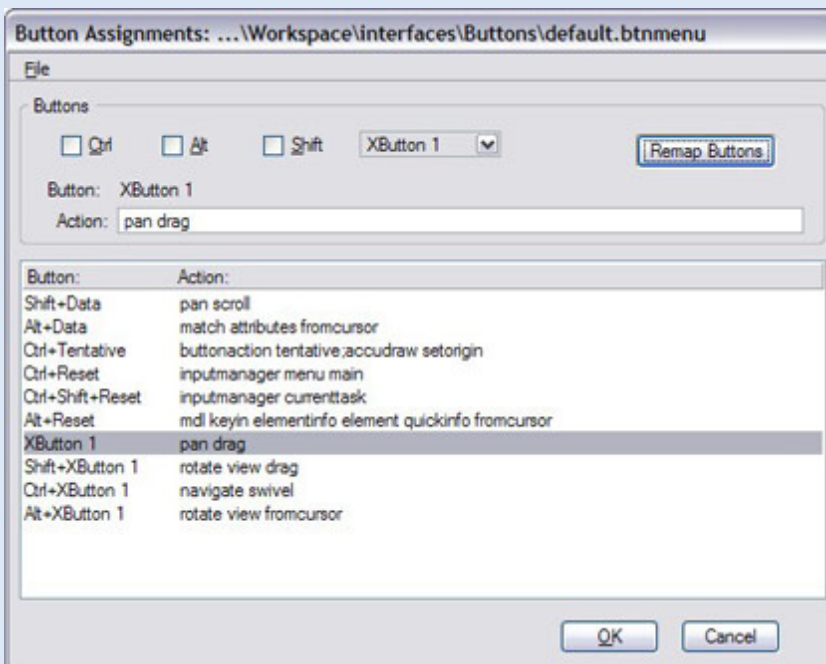
[[Tip Archives](#)]

MicroStation XM Tip

<< back to top

XM Mouse Settings

The mouse has expanded its functionality greatly by including useful tools to the typical two button mouse with wheel. The wheel is now referred to the “XButton 1” which, by default, is the pan drag command. Button assignments are now stored as a file that can be saved by the user, the default name for this file is **default.btnmenu**.



Left button “Data”

Click: Accept or identify

Click and Hold: Defines start and stop of a selection area, fence or element

Shift + Click: Pan view

Ctrl + Click: Continue a selection

Alt + Click: Match attributes from an element

Shift + Ctrl: Temporarily disables AccuSnap

Shift + Ctrl + Drag: Element selection overlap block

Double Click: Edit text

Right button “Reset”

Click: reset command

Click and Hold: MicroStation context sensitive menu on you cursor

Shift + Click: View pop-up control located on your cursor

Ctrl + Click: Main toolbar located on your cursor

Alt + Click: Element quick info located on your cursor

Shift + Ctrl: Task Navigation toolbar located on your cursor

Wheel “XButton1”

No longer defined as the Tentative button the preferred setting for tentative is now Left - Right chord.

Click: Pan view

Click and Hold: Pan View

Double Click: Fit view

Shift + Click: Rotate view target is reference point (3D tool only)

Ctrl + Click: Rotate view camera is reference point (3D tool only)

Alt + Click: Set rotate view target reference point (3D tool only)

Roll: Zoom in/out

Shift + Roll: Pan with zoom

Ctrl + Roll: Walk forwards / backwards

Alt + Roll: Pan left / right

Left and Right button “Chord”

Click: Tentative point

Shift + Click: Snaps pop-up located on your cursor

Ctrl + Click: Set AccuDraw origin

[[Tip Archives](#)]

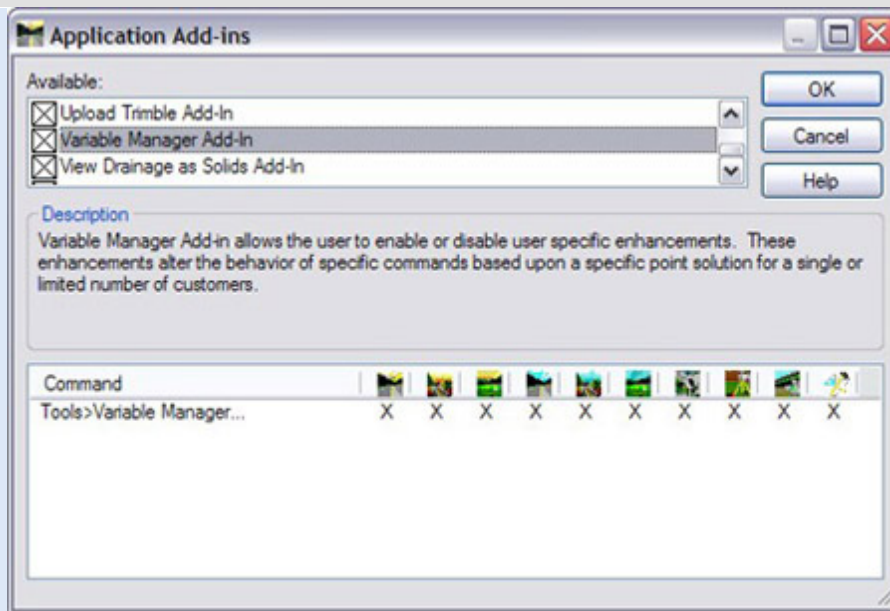
InRoads Tip

<< back to top

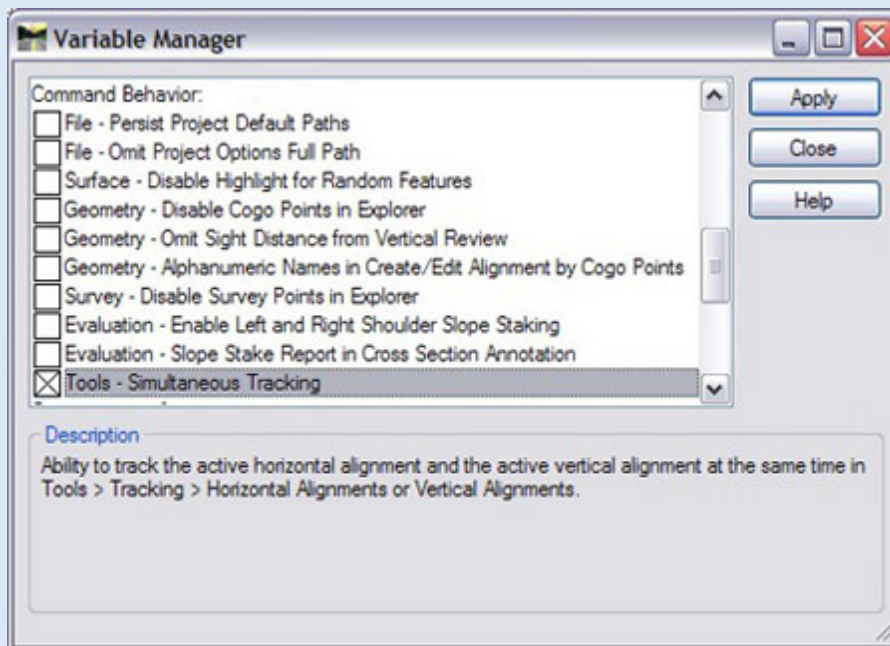
InRoads XM Tracking

A new option available in InRoads XM is the ability to track both the horizontal and vertical simultaneously. To do so there is some setup to get it working the first time but once it is setup the Plan and Profile views will track at the same time.

1. From the InRoads pull down menu **Tools > Application Add-in**
2. In the Application Add-in dialog check the **Variable Manager Add-in** then select **OK**.



3. From the InRoads pull down menu **Tools > Variable Manager**
4. In the Variable Manager dialog check the **Tools – Simultaneous Tracking**



5. The setup is complete to start tracking simultaneously.
From the InRoads pull down
Tools > Tracking > Horizontal Alignments
The alignment will show tracking locations in both the Plan and Profile views.

[See Video Clip](#)

[[Tip Archives](#)]

Open Enrollment Classes

[<< back to top](#)

Open-Enrollment Classes With Seats Available.

[MicroStation V8 - AccuDraw](#)

Aug. 17

Madison, WI

[MicroStation V7 \(J\) - Fundamentals](#)

Aug. 21-24

Madison, WI

● THIS WILL BE OUR LAST V7 OPEN ENROLLMENT OFFERING

MicroStation V8 - User Update	Sep. 4-5	Madison, WI
MicroStation V8 - Power User	Sep. 6-7 17	Madison, WI
MicroStation V8 - Everything 3D	Oct. 10-12 17	Madison, WI
InRoads - Fundamentals	Aug. 6-10	Madison, WI
InRoads - Site	Sep. 12-14	Madison, WI
InRoads - Survey	Oct. 1-2	Madison, WI

To be removed from this monthly newsletter, please reply to this message and note your wishes.

[Top](#) | [Contact us](#) | [Visit our web site](#)