



News

New MicroStation Courseware Available

The Envision Group has released our first official courseware for purchase and is available on our [website](#). Our first title, '**MicroStation 2004 V8 Fundamentals**' is available in 2 editions: 'Civil' and 'Architectural'.

Each edition contains lab files and exercises that are tailored to the respective disciplines. The manual contains 20 chapters, over 700 pages of reference material, and retails for \$95.00 + shipping and handling. Visit our [courseware page](#) for more information.

Legal Stuff:

We do not sell Bentley products. MicroStation and InRoads are Bentley products and trademarked as such. We only offer this information as a benefit to our subscribers.

Events

[<< back to top](#)

Bentley:

- [Bentley Civil Regional Training for GEOPAK Users](#) - Dec 10-12, 2007
LOEWS Miami Beach Hotels - Miami Beach, FL
- [BCUKI Winter Conference 2008](#) - Feb 28-29, 2008
Sheraton Heathrow Hotel - London, UK
- [Nebraska User Group Spring 2008 Conference & Workshops](#) - Mar 15-16, 2008
Cornhusker Marriott - Lincoln, Nebraska
- [Mid-Continent MicroStation Community 2008 Summer Conference](#) - August, 2008
Sheraton Heathrow Hotel - London, UK
- [The IDDEA Group 2008 Fall Conference](#) - Oct 1-3, 2008
Scheman Center on Iowa State Campus - Ames, Iowa

Are there TMC Meetings, Seminars, Trade shows, and Conferences you think are interesting? [Let us know](#) and we will add them to our newsletter.

MicroStation Tip

[<< back to top](#)

Object Linking and Embedding

MicroStation can import files from external application such as Microsoft Word and Excel.

Link an Excel Sheet to MicroStation:

1. Open the **Excel file** and Select the amount of data you want to copy.
2. From the Excel pulldown **Edit > Copy**. The data is copied to the clipboard.
3. Open the **MicroStation file** you want to paste the Excel Sheet in to.
4. From the MicroStation pulldown **Edit > Paste Special**. The Paste Special dialog appears.

IN THIS ISSUE

1. [News](#)
2. [Events](#)
3. [MicroStation tip](#)
4. [InRoads tip](#)
5. [Open enrollment classes](#)
6. [On-site training](#)

SPREAD THE WORD

Spread the word. Pass this newsletter on to a friend. If a friend forwarded this issue to you, [sign up](#) for your own copy.

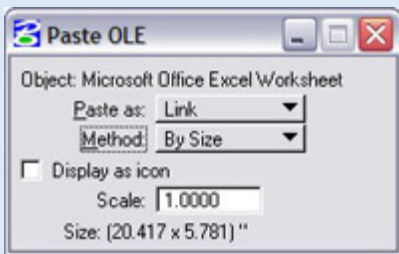
QUICK LINKS

- [Click for past issues.](#)





5. From the list of Data Type select “**Linked Microsoft Excel Worksheet**”
6. Select the **Paste** icon.
7. In the Paste OLE Tool Settings dialog set the Method to **By Size** and set the appropriate scale.



8. Place a data point in the view to place the linked excel sheet.



Importing Options:

There are three ways to import the source files as pictures, embedded files, or linked files.

- A **picture** is a screen capture of the application. The image is static and is not updated when changes are made to the source.
- An **embedded** file is imported and saved into the DGN file. Edits made to the embedded file are saved in the DGN file.
- A **linked** file is imported to the DGN file but still resides in the original application. Edits are made to the source file and can be updated using the MicroStation Update link tool.

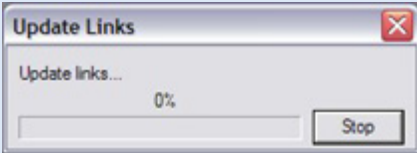
MicroStation Viewing:

When viewing a linked or embedded file in MicroStation it may appear shaded. This is due to the source application, Excel, being currently opened and its worksheet edited (see screen shot below). Once the source application is saved and closed the shading will not be seen in MicroStation.

Part No	Desc	Address	Location	DATE OF ORDER	DATE OF DELIVERY	DATE OF RECEIPT	DATE OF INVOICE	DATE OF PAYMENT	DATE OF CANCELLATION	DATE OF RETURN
101	101	101	101	101	101	101	101	101	101	101
102	102	102	102	102	102	102	102	102	102	102
103	103	103	103	103	103	103	103	103	103	103
104	104	104	104	104	104	104	104	104	104	104

OLE Updating:

After changes are made to the source application the data stored in the DGN file will need updating. OLE data can be updated from the MicroStation pulldown menu **Edit > Update Links**.



[[Tip Archives](#)]

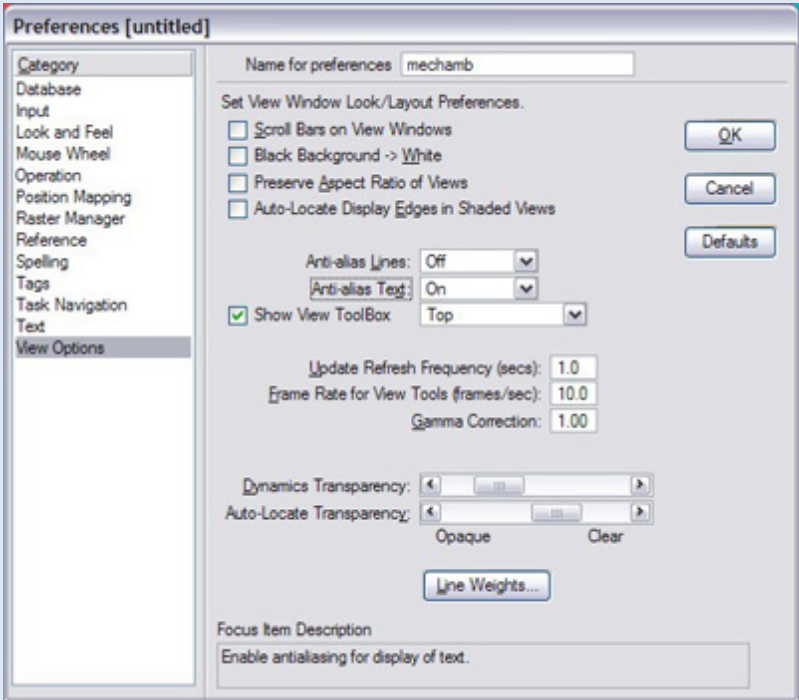
MicroStation XM Tip << back to top

View Preferences

The display of MicroStation graphics is more dependent on the computer video card than in the past. The graphics engine also utilizes Microsoft DirectX 9 to make graphics smoother in both 2D and 3D designs.

The comment users typically have is that text and lines look fuzzy. That is the anti-alias setting in the Workspace Preferences dialog. Turning off the anti-alias setting will have the elements display similar to the way they did in previous versions of MicroStation.

Workspaces Preferences - View Options



Anti-Alias Text and Line – changes the display of these graphics from jagged edges to smooth.

Auto-Locate Display Edges in Shaded Views – when selecting a surface or solid in a shaded view the edges along with the surface will be displayed.

Auto-Locate Transparency – when elements are identified using the element selection tool, the highlight color transparency is applied.

Dynamics Transparency – when elements with a fill are placed or modified in the design file, the fill becomes transparent.

[[Tip Archives](#)]

InRoads Tip

<< back to top

InRoads 8.7 - XM & Managing Templates

Things you should be aware of:

- When templates are defined in a corridor, they are copied from the Template Library to the *.ird (Inroads Roadway Designer) file
- Changes made in the template library to templates previously specified in a corridor definition require synchronization with the template library. Select Roadway Designer > Template Drops>Synchronize with Library
- Individual template applications can be edited in the Roadway Designer interface (see tip from January of 2007). These edited templates are also stored in the *.ird file and only in the *.ird file (identified in the 'Revised In' column).
- The 'orphan' templates stored in the *.ird file can be copied back into the Template Library. From the Create Template dialog, select Tools>Template Library Organizer>Available in: section and pick the browse button. When the 'Open Template Library, dialog opens change the 'Files of Type' filter to *.ird file types, drag and drop to copy templates.
- Unlike version 8.5 and earlier which copied templates as a disk-based operation, templates are now copied to the currently loaded template library and available for immediate use without reloading the template library. Save your changes and/or additions.

[[Tip Archives](#)]

Open Enrollment Classes

<< back to top

Open-Enrollment Classes With Seats Available.

MicroStation V8 - User Update	Nov. 27-28	Madison, WI
MicroStation V8 - Power User	Nov. 29-30	Madison, WI
MicroStation V8 - Power User	Jan. 15-16	Madison, WI
MicroStation V8 - Accudraw	Jan. 25	Madison, WI
MicroStation V8 - Fundamentals	Feb. 4-7	Madison, WI
MicroStation V8 - Everything 3D	Feb. 20-22	Madison, WI
InRoads - XM Essentials	Dec. 3-7	Madison, WI
InRoads - Survey	Jan. 8-9	Madison, WI

To be removed from this monthly newsletter, please reply to this message and note your wishes.

[Top](#) | [Contact us](#) | [Visit our web site](#)