



## News

### MicroStation XM 'Athens' Early Access Available

Bentley has released the first beta of XM 'Athens' to MicroStation SELECT subscribers. This release of MicroStation includes hundreds of user requested enhancements as well as some completely new concepts and technologies. These represent the latest innovations by MicroStation which will benefit you and your organizations with improved workflows and productivity enhancements. These enhancements include new technology like Dynamic Views, in Place Reference Activation, Geo-Coordination and Conceptual Modeling, a completely new printing system in the MicroStation Print Organizer, and a new Visualization Style system make rendering easier than ever.

MicroStation 'Athens' uses the same V8 DGN file format as previous editions. No format change means continued leverage of existing V7 and V8 DGN files and no upgrade headaches.

#### Legal Stuff:

We do not sell Bentley products. MicroStation and InRoads are Bentley products and trademarked as such. We only offer this information as a benefit to our subscribers.

## Events

<< back to top

### Bentley:

- [Bentley Civil Regional Training for GEOPAK Users](#) - Dec 10-12, 2007  
LOEWS Miami Beach Hotels - Miami Beach, FL
- [BCUKI Winter Conference 2008](#) - Feb 28-29, 2008  
Sheraton Heathrow Hotel - London, UK
- [Nebraska User Group Spring 2008 Conference & Workshops](#) - Mar 17-18, 2008  
Cornhusker Marriott - Lincoln, Nebraska
- [The IDDEA Group 2008 Fall Conference](#) - Oct 1-3, 2008  
Scheman Center on Iowa State Campus - Ames, Iowa

Are there TMC Meetings, Seminars, Trade shows, and Conferences you think are interesting? [Let us know](#) and we will add them to our newsletter.

## MicroStation Tip

<< back to top

### Multi-snap and Setting Priority

Multi-snap is an extension of AccuSnap allowing the user to use more than one snap at a time. For example Keypoint, Nearest, and Intersection snap can run simultaneously. This will save time of changing to different snap modes. There is an order of how the Multi-snaps are processed this order can be changed from the Multi-snaps settings dialog.

#### Set Multi-snap

1. Open the Button Bar toolbox **Settings > Snaps > Button Bar**
2. Double click the Multi-snap 1 button on the Snap Button Bar toolbox. The

## IN THIS ISSUE

1. [News](#)
2. [Events](#)
3. [MicroStation tip](#)
4. [InRoads tip](#)
5. [Open enrollment classes](#)
6. [On-site training](#)

## SPREAD THE WORD

Spread the word. Pass this newsletter on to a friend. If a friend forwarded this issue to you, [sign up](#) for your own copy.

## QUICK LINKS

- [Click for past issues.](#)

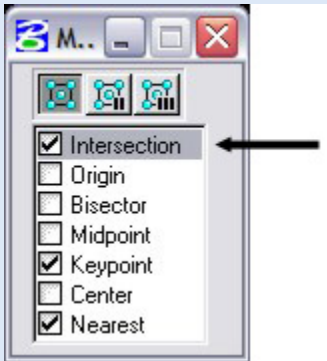


Multi-snap 1 will be highlighted and shown as speckled gray.



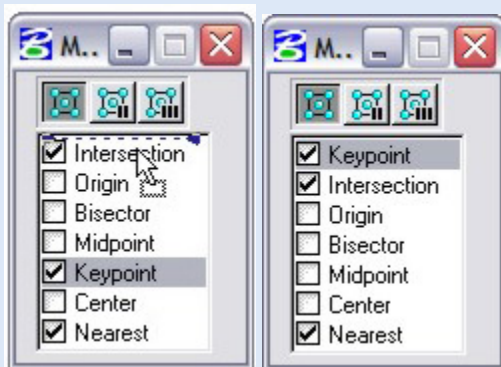
### Set Priority Multi-snap 1

1. To open the settings for Multi-Snap **Settings > Snaps > Multi-snaps**



Multi-Snap priority is set top to bottom with Intersection having the higher priority over Keypoint.

2. To change the priority Left click and hold Keypoint then drag to the top of the dialog.



[ [Tip Archives](#) ]

## MicroStation XM Tip

<< back to top

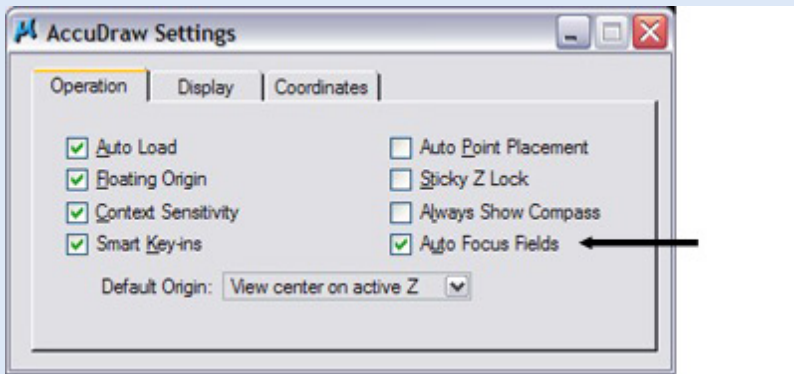
### XM - AccuDraw Enhancements

#### Shortcut Key-ins

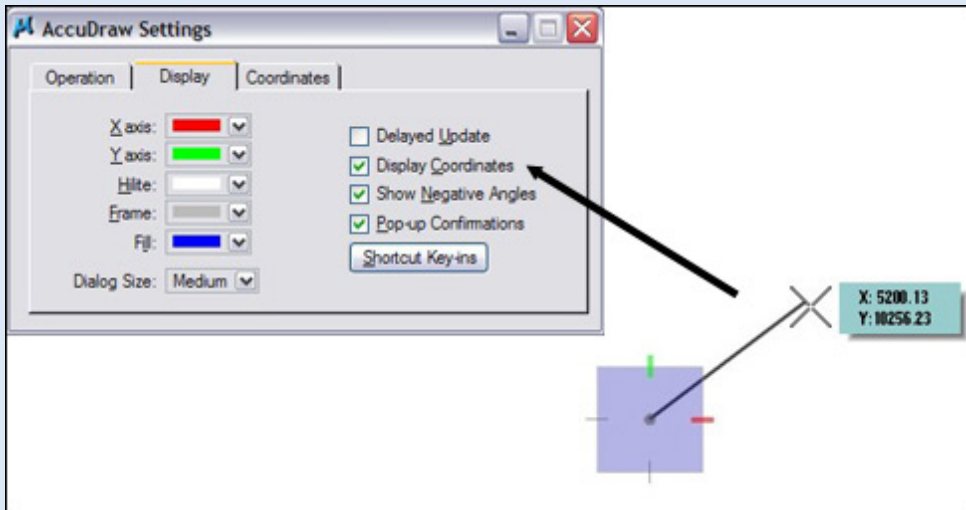
- HA – “AccuDraw on Hold” will remove the AccuDraw compass for one data point.
- HS – “AccuSnap Toggle” will toggle off or on AccuSnap; replaces J.
- HU – “AccuSnap Suspend” will suspend AccuSnap for one time command; replaces U.
- RE – “Rotate Element” will rotate the AccuDraw compass to an element that is identified.
- RV – “Rotate View” will put the view into dynamic rotation mode.

#### Settings

Operation: Auto Focus Fields (only available with Polar Mode) will change the focus and lock the field when the shortcut key-ins A, and D are used.



Display: Added option for compass fill and dialog size. In addition, an option exists to display coordinate values on the cursor during placement.



[ [Tip Archives](#) ]

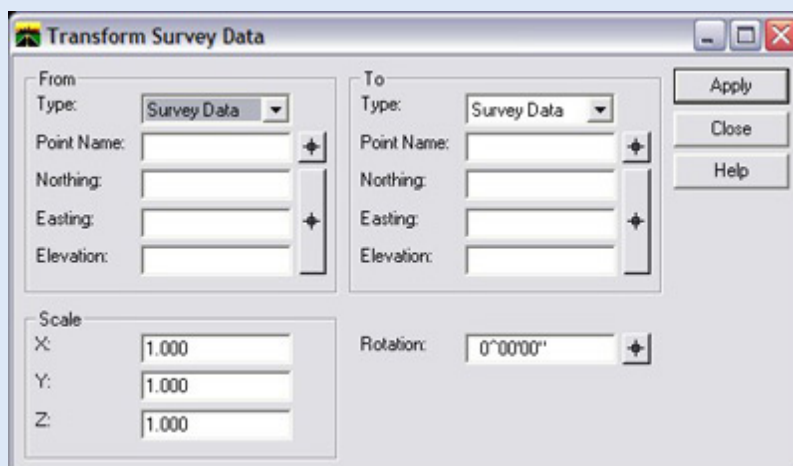
## InRoads Tip

<< back to top

### Transform Survey Fieldbook

This dialog controls the transformation of survey data in the Fieldbook. The field book can be moved, rotated and then scaled to new control points.

1. From the InRoads dialog pull down menu select **Survey > Transform Survey Data**. The Transform Survey Data dialog will appear.



- In the **From** section of the Transform Data dialog type the **Point Name** that you will be using as the reference point in the field then hit the **Tab** key. This will automatically fill in the Northing, Easting, and Elevation values for the point from the Fieldbook data.

- In the **To** section of the Transform Data dialog Select the **Long Target** button to define the Northing, Easting, and Elevation. The Transform Survey Data dialog will automatically minimize allowing more area to select the point in the MicroStation view.
- Click the **Apply** button and the Fieldbook will be transformed.

[ [Tip Archives](#) ]

## Open Enrollment Classes

<< back to top

### Open-Enrollment Classes With Seats Available.

|   |            |             |
|---|------------|-------------|
| <a href="#">MicroStation V8 - Power User</a>    | Jan. 15-16 | Madison, WI |
| <a href="#">MicroStation V8 - Accudraw</a>      | Jan. 25    | Madison, WI |
| <a href="#">MicroStation V8 - Fundamentals</a>  | Feb. 4-7   | Madison, WI |
| <a href="#">MicroStation V8 - Everything 3D</a> | Feb. 20-22 | Madison, WI |
| <a href="#">InRoads - Survey</a>                | Jan. 8-9   | Madison, WI |
| <a href="#">InRoads - Site</a>                  | Mar. 3-5   | Madison, WI |
| <a href="#">InRoads - Fundamentals</a>          | Mar. 10-14 | Madison, WI |

To be removed from this monthly newsletter, please reply to this message and note your wishes.

[Top](#) | [Contact us](#) | [Visit our web site](#)