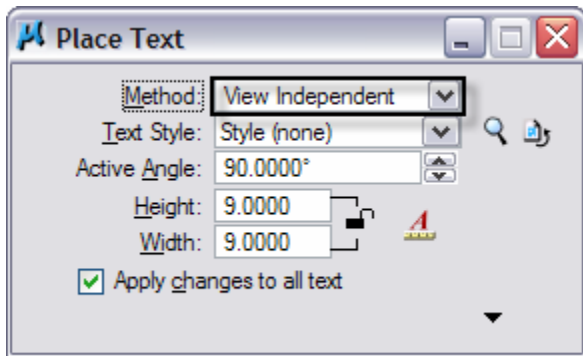




View Independent Text

View Independent Text will stay normal to your view even if you rotate the view display. This type of text is handy when placing text call outs for benchmarks and power pole numbers that need to be legible even when the plan and profile sheets are rotated. This tip works on all versions of MicroStation.



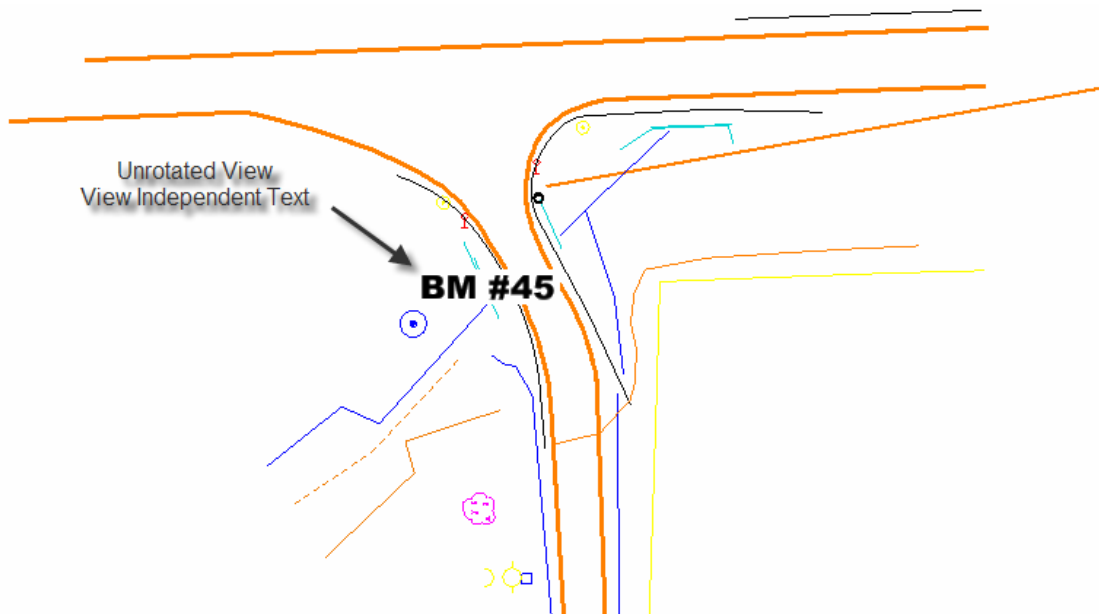
envision

SEE THE CAD POSSIBILITIES

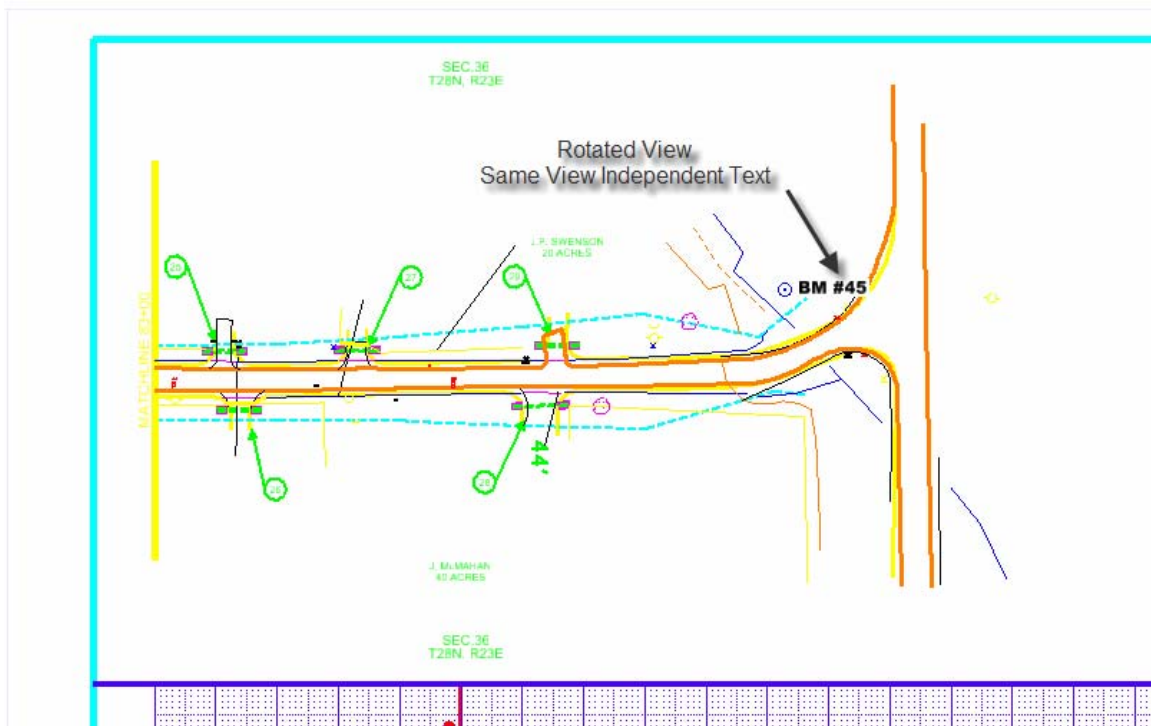
8517 Excelsior Drive, Suite 102, Madison WI 53717 ph 608-836-3903 fax 608-662-9043 envisioncad.com



In the image below the view independent text is placed for a bench mark number in the topo base map.



When the topo base map is referenced to a plan and profile sheet the text will automatically rotate and stay normal to the view.



[The Envision Group](#) is a leading provider of CAD related solutions to engineers, surveyors, and GIS professionals. We have been providing expert solutions for CAD, Civil and Geospatial applications for both government agencies and AEC firms since 1996.